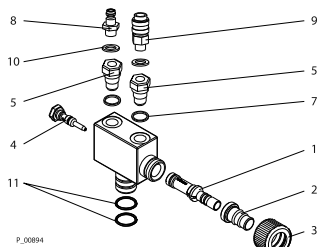




Hint:
The service sticker 29 must be signed after checking the injector and pasted on the injector housing.
After a service, e.g. in June 2008 the next service is due after 12 months; in June 2009.

14.6 POWDER INJECTOR PI-F1



| Item | K | Quantity | Order No. | Description |
|------|---|----------|-----------|----------------------------|
| | | | 241622 | Powder injector PI-F1 |
| 1 | ◆ | 1 | 241225 | Clearance collector nozzle |
| 2 | | 1 | 241476 | Conductive nozzle |
| 3 | | 1 | 241466 | Outer nut |
| 4 | ◆ | 1 | 241923 | Injector nozzle |
| 5 | | 2 | 241460 | Spring check valve |
| 7 | | 1 | 9970149 | Sealing ring |
| 8 | | 1 | 9992709 | Quick-release plug |
| 9 | | 1 | 9992710 | Quick-release socket |
| 10 | | 1 | 9970150 | Sealing ring |
| 11 | ◆ | 2 | 9974023 | Conducting sealing ring |

◆ Wearing part